



# GAT MONTHLY MEMBERSHIP PROGRESS REPORT

Results as of: 12/31/2020

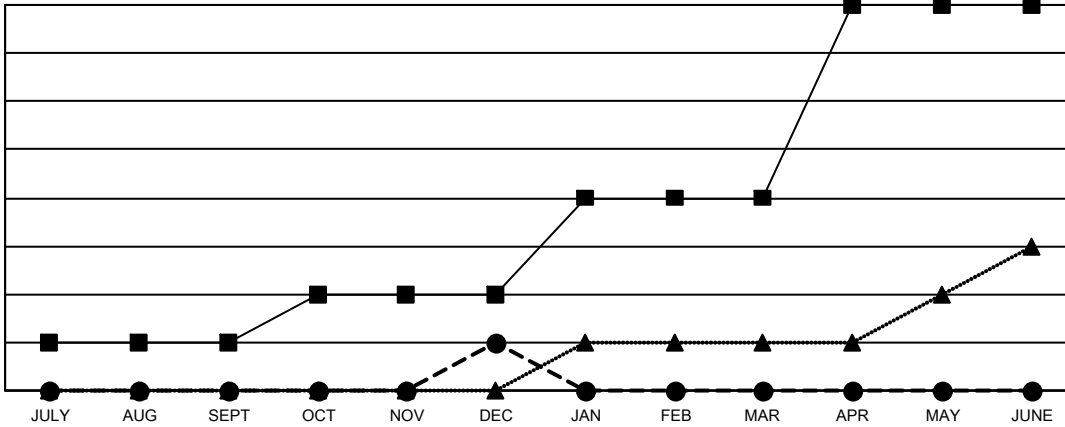
Multiple District 16

LOCATION: NEW JERSEY

Clubs			
RESULTS FOR 2020-2021			
QUARTER	NEW CLUB GOAL	NEW CLUBS	DROPPED CLUBS
JULY/AUG/SEPT	1	0	4
OCT/NOV/DEC	1	1	2
JAN/FEB/MAR	2	0	0
APR/MAY/JUNE	4	0	0

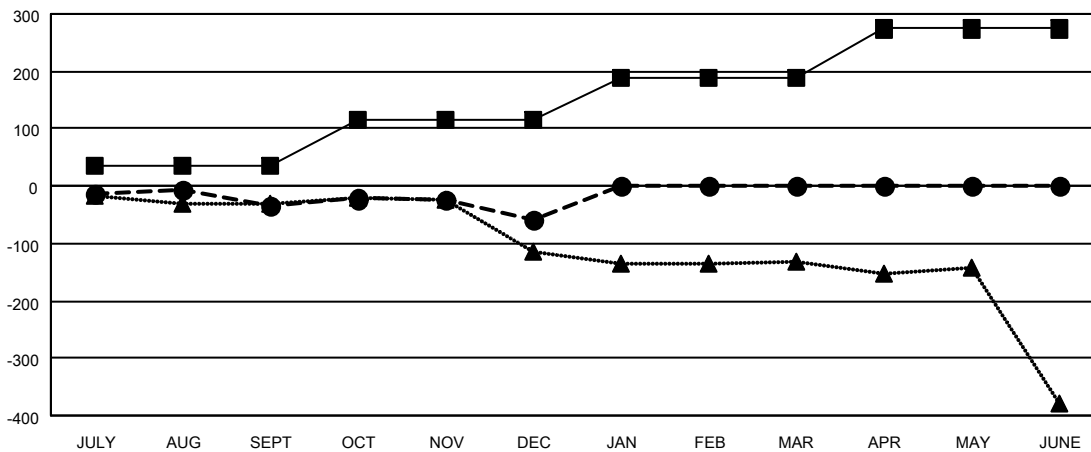
Members			
RESULTS FOR 2020-2021			
QUARTER	MEMBER GROWTH NET GOAL	MEMBER GROWTH ACTUAL	DROPPED MEMBERS ACTUAL (including transfers)
JULY/AUG/SEPT	34	104	106
OCT/NOV/DEC	80	108	117
JAN/FEB/MAR	75	0	0
APR/MAY/JUNE	85	0	0

GOALS AND ACTUAL NEW CLUBS CUMULATIVE



- - CURRENT YEAR GOALS FOR NEW CLUBS
- - CURRENT YEAR ACTUAL NEW CLUBS
- ▲ - LAST YEAR ACTUAL NEW CLUBS

GOALS AND ACTUAL MEMBERS CUMULATIVE



- - MEMBER GROWTH NET GOAL
- - MEMBER GROWTH ACTUAL
- ▲ - LAST YEAR MEMBERSHIP ACTUAL

DROPPED CLUBS: 6	43 CLUBS OF 179 ADDED 1 OR MORE NEW MEMBERS	<u>GENDER DISTRIBUTION</u>
		MALE 2,759 (66.24%)
		FEMALE 1,406 (33.76%)
<u>DROPPED MEMBERS</u>	<a href="#">CLICK HERE FOR CUMULATIVE MEMBERSHIP DATA</a>	TOTAL FAMILY UNIT MEMBERS 713
DECEASED 17		FAMILY MEMBERS PAYING HALF DUES 374
CLUB CANCELLED 15		
OTHER 191		
<b>TOTAL 223</b>		